



MONTHLY MEMBERSHIP PROGRESS REPORT

District 202 L

Results as of: 4/30/2015

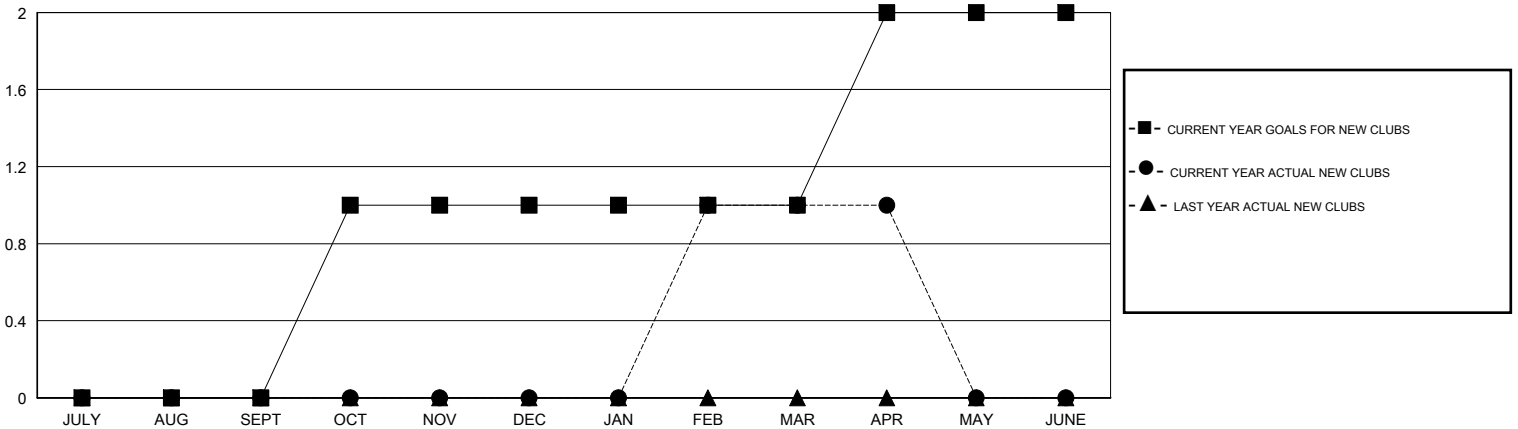
GMT: Huck Taingahue

LOCATION NEW ZEALAND

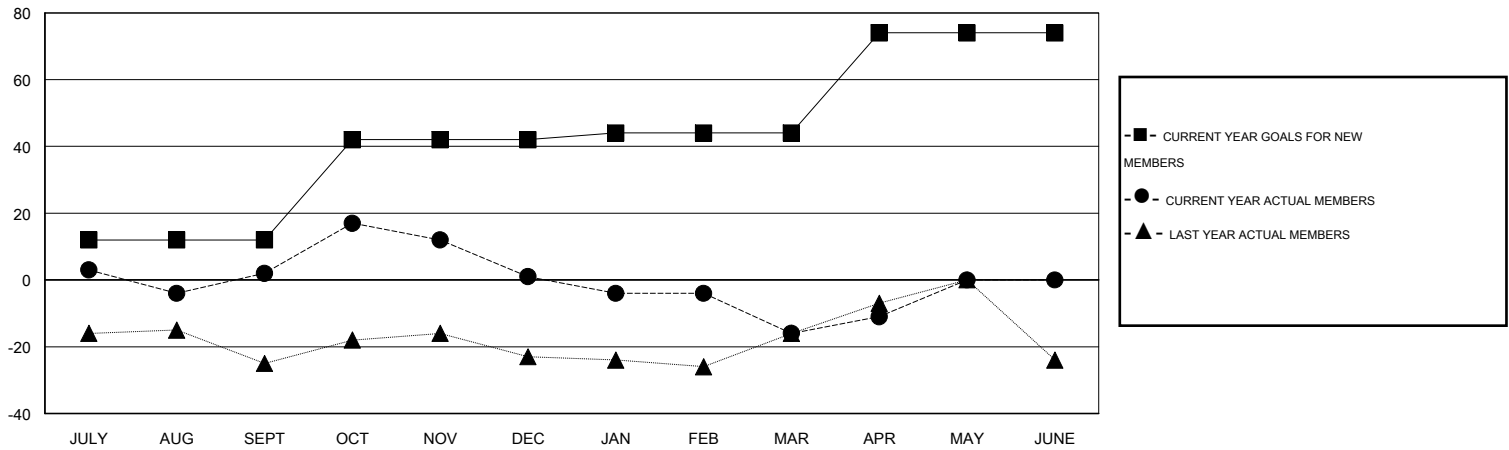
GMT CA 7

Clubs					Members				
RESULTS FOR 2014-2015					RESULTS FOR 2014-2015				
QUARTER	NEW CLUB GOAL	NEW CLUBS	DROPPED CLUBS	NET GAIN/LOSS	QUARTER	NEW MEMBER GOAL	CHARTER AND NEW MEMBERS ADDED	DROPPED MEMBERS	NET GAIN/LOSS
JULY/AUG/SEPT	0	0	1	-1	JULY/AUG/SEPT	12	54	52	2
OCT/NOV/DEC	1	0	1	-1	OCT/NOV/DEC	30	48	49	-1
JAN/FEB/MAR	0	1	0	1	JAN/FEB/MAR	2	57	74	-17
APR/MAY/JUNE	1	0	0	0	APR/MAY/JUNE	30	20	15	5

GOALS AND ACTUAL NEW CLUBS CUMULATIVE



GOALS AND ACTUAL MEMBERS CUMULATIVE



DROPPED CLUBS: 2	44 CLUBS OF 67 ADDED 1 OR MORE NEW MEMBERS	<u>GENDER DISTRIBUTION</u>							
<u>DROPPED MEMBERS</u>		MALE	1,331 (70.76%)						
DECEASED	20	FEMALE	550 (29.24%)						
CLUB CANCELLED	0	<table border="1"> <tr> <td>FAMILY UNIT MEMBERS</td> <td>153</td> </tr> <tr> <td>HEAD OF HOUSEHOLD</td> <td>76</td> </tr> <tr> <td>NON-HEAD OF HOUSEHOLD</td> <td>77</td> </tr> </table>		FAMILY UNIT MEMBERS	153	HEAD OF HOUSEHOLD	76	NON-HEAD OF HOUSEHOLD	77
FAMILY UNIT MEMBERS	153								
HEAD OF HOUSEHOLD	76								
NON-HEAD OF HOUSEHOLD	77								
OTHER	170								
TOTAL	190								

[CLICK HERE FOR HEALTH ASSESSMENT DATA](#)